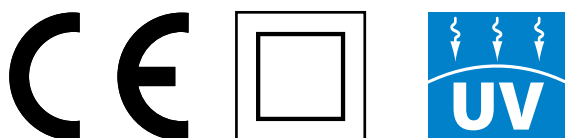


ENCLOSURES HERMETIC HERMETICA IP65

Protection degree	IP 65
Material	CASING:ABS/Door:PC
Impact resistance	IK 08
Protection class	II
Color	RAL 7035(light gray)
Rated voltage	AC 440V/50Hz
Thermal condition	-20°C+70 °C
Thermal test	70 °C
Norm	PN-EN 61439-3:2012, PN-EN 61439-1:2011



- Max MCB's height till 52 mm,
- included DIN rail,
- 3 and 4 mod casing one of the smallest at market,
- walls with knockout holes PG,
- possibility sealing window and enclosure,
- impact resistance,
- window regulation position stages: open and half open,
- individual equipment configuration into bigger enclosures,
- solid construction (thicker walls).

ENCLOSURES HERMETIC HERMETICA IP65

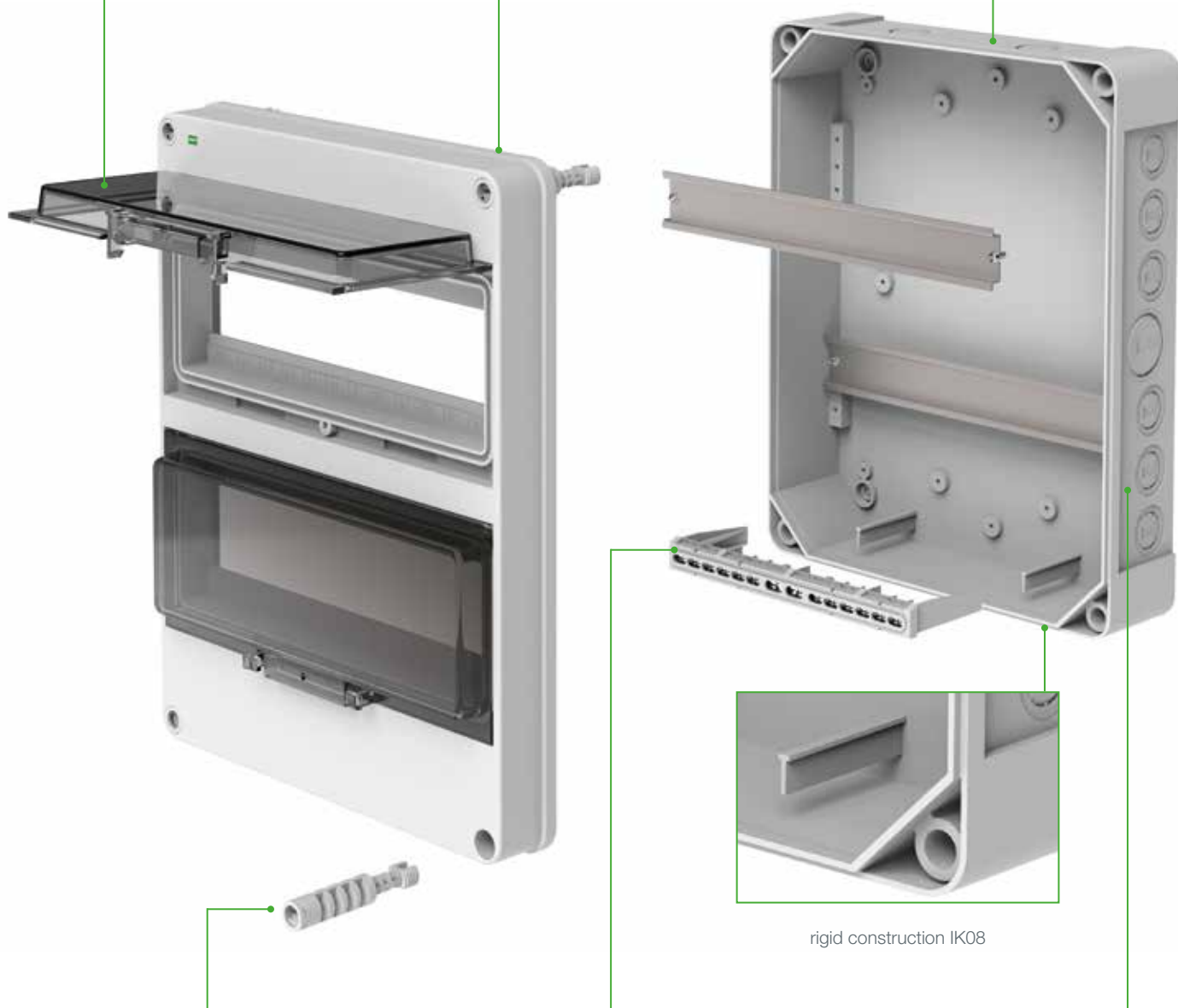
Door w Colorze Transp.m
z możliwością plombowania



Machine sealing under door and
upper cover



Large space for cabling



rigid construction IK08



screw with sealing



optional terminal bars PE+N



weaknesses for cable glands

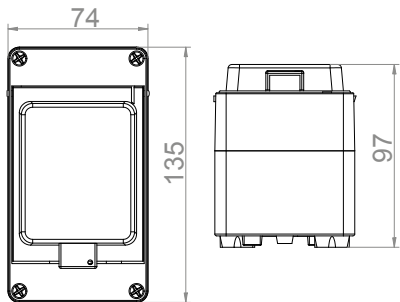
IP 65 UV IK 08 400 V ABS PC



HERMETICA RN 1x3 IP65

Type	Color	Pack.	Weight	Index
RN-1x3	Gray RAL 7035	1 pc.	kg/1 pc.	2201-01

Dimensions:135x74x97 mm
N terminal included.



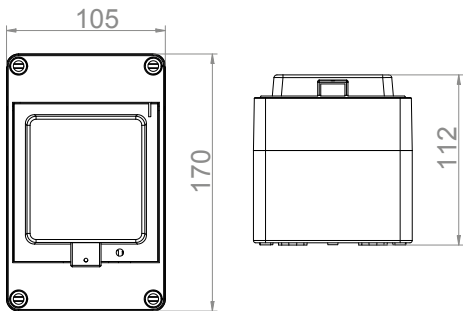
IP 65 UV IK 08 400 V ABS PC



HERMETICA RN 1x4 IP65

Type	Color	Pack.	Weight	Index
RN-1x4	Gray RAL 7035	1 pc.	kg/1 pc.	2202-01

Dimensions:170x105x111 mm
N terminal included.



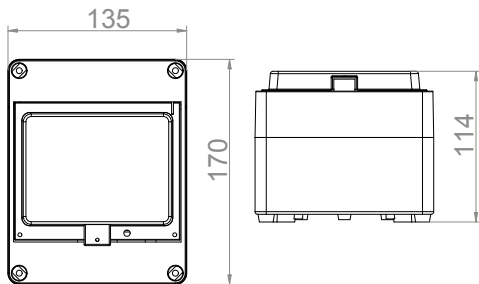
IP 65 UV IK 08 400 V ABS PC



HERMETICA RN 1x6 IP65

Type	Color	Pack.	Weight	Index
RN-1x6	Gray RAL 7035	1 pc.	kg/1 pc.	2203-01

Dimensions:170x135x112 mm
N terminal included.



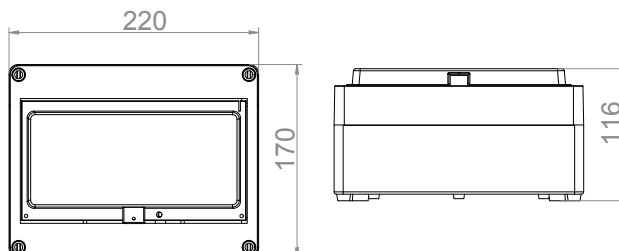
IP 65 UV IK 08 400 V ABS PC



HERMETICA RN 1x8+2 IP65

Type	Color	Pack.	Weight	Index
RN-1x8+2	Gray RAL 7035	1 pc.	kg/1 pc.	2204-01

Dimensions: 168x220x112.5 mm
Terminal blocks included
N 2x(1-10)mm² + 3x(1-16)mm²
PE 2x(1-10)mm² + 3x(1-16)mm²



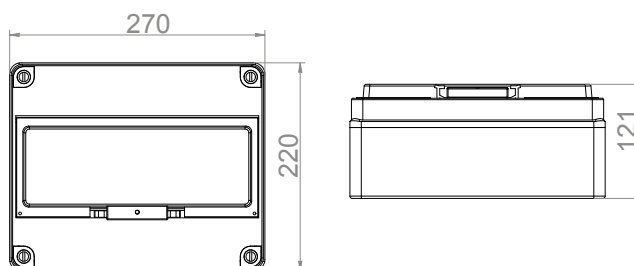
IP 65 UV IK 08 400 V ABS PC



HERMETICA RN 1x12+1 IP65

Type	Color	Pack.	Weight	Index
RN-1x12+1	Gray RAL 7035	1 pc.	kg/1 pc.	2207-01

Dimensions: 220x270x120 mm
Terminal blocks included
N 5x(1-10)mm² + 2x(1-16)mm²
PE 5x(1-10)mm² + 2x(1-16)mm²



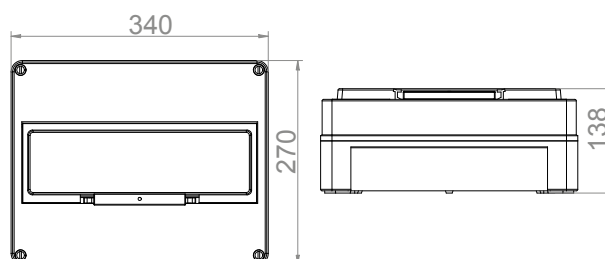
IP 65 UV IK 08 400 V ABS PC



HERMETICA RN 1x12+4 IP65

Type	Color	Pack.	Weight	Index
RN-1x12+4	Gray RAL 7035	1 pc.	kg/1 pc.	2208-01

Dimensions: 270x340x138 mm
Terminal blocks included
N 12x(1-10)mm² + 2x(1-16)mm²
PE 12x(1-10)mm² + 2x(1-16)mm²



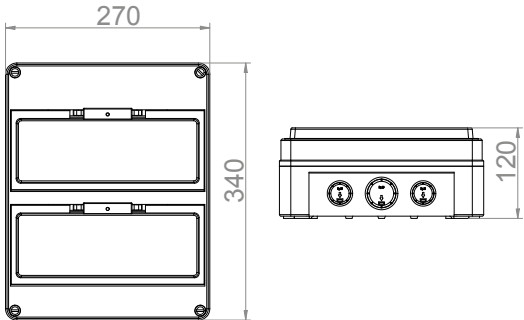
IP 65 UV IK 08 400 V ABS PC



HERMETICA RN 2x12+2 IP65

Type	Color	Pack.	Weight	Index
RN-2x12+2	Gray RAL 7035	1 pc.	kg/1 pc.	2209-01

Dimensions:340x270x119,5 mm
Terminal blocks included
N 12x(1-10)mm² + 2x(1-16)mm²
PE 12x(1-10)mm² + 2x(1-16)mm²



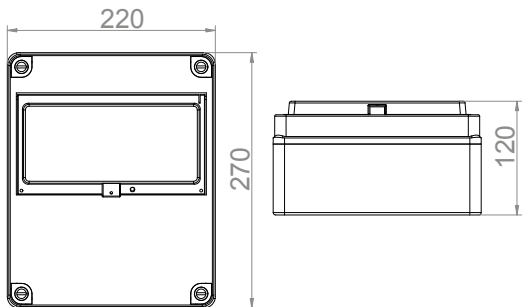
IP 65 UV IK 08 400 V ABS PC



HERMETICA RN 1x10 IP65

Type	Color	Pack.	Weight	Index
RN-1x10	Gray RAL 7035	1 pc.	kg/1 pc.	2205-01

Dimensions:270x220x120 mm



IP 65 UV IK 08 400 V ABS PC



HERMETICA RN 1x13 IP65

Type	Color	Pack.	Weight	Index
RN-1x13	Gray RAL 7035	1 pc.	kg/1 pc.	2206-01

Dimensions:340x270x119,5 mm

